

Godfrey S. Kobets



Our mission: To provide services for treating substance use, mental health, and homelessness so that individuals may return to the community as responsible, employed, and permanently housed contributing members of society.

February 2023

Letter from Mark L. Mullinix, Board Chair

Dear Reader,

It's my distinct honor and pleasure to succeed Jeff Zande to serve as chair of the Benilde Hall Board in this, our 30th anniversary year of operations. I am privileged to be associated with the entire Benilde Hall team whose work is vital to the Kansas City community. At present we are in the midst of increasing in-residence bed capacity by building a wing addition specifically for veterans and making modifications within our current facility that will be available to all clients.

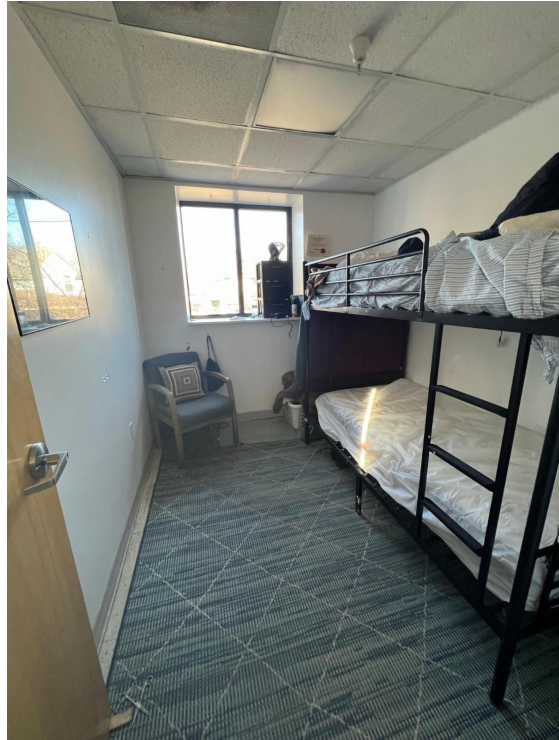
As we look to the future, we will continue to expand Benilde Hall's capacity to address homelessness and deliver recovery services through our high quality, effective programs. In doing so, Benilde Hall will then be able to address more of the city's homeless population without losing our central focus: supporting and equipping our residents to re-engage fully in our Kansas City community as healthy, permanently housed, and employed residents.

In closing I wish to thank all of our funding partners, donors, and key stakeholders for all they have done these past 30 years and continuing their support for those we serve.

Sincerely,
Mark L. Mullinix, Board Chair

Benilde Hall Expansion

We recently converted our Accounting and Case Manager's offices at Benilde Hall into bedrooms, creating 10 new beds for clients. Purchasing the house next door to Benilde Hall for our Executive offices has allowed us to increase the number of clients we can serve. We are blessed to be able to help more people through this expansion.



Benilde Hall on FOX4 News



Our Executive Director, Ken Vick, had the opportunity to speak with Shannon

Rousseau about the proximity of a marijuana grow facility located less than a mile away from Benilde Hall. Currently, there are no regulations in Missouri limiting how close a grow facility can be to a treatment center.



KC drug recovery center concerned with smell from grow operation

Ken Vick on Recovery Talk Podcast



Ken had the opportunity to talk about the work Benilde Hall is doing on the Recovery Talk Podcast.

Ken's interview starts at 25:45.

Organizational Stakeholders
of the Month, Vol. 10

Volunteer Spotlight: Park University



We want to thank the Park University students and faculty who volunteered at Benilde Hall in honor of Martin Luther King Jr. Day. They did a great job organizing our clothing closet. Check out the before and after pictures!





Donor Spotlight: KC Cattle Company

Benilde Hall's Safe Haven program was chosen to be KC Cattle Company's latest Give Back Ground Beef recipient back in December and will continue to be their Give Back Ground Beef recipient until the end of March.

Thank you to KC Cattle Company and to everyone who has donated!

**Donate a Pound of Ground
Beef & Give Back**



Hire Benilde Services

Need affordable lawn care?

Benilde Services

- *Mowing*
- *Clean up*
- *Planting*
- *Landscaping*

Call 816-842-5836

Free estimates & competitive prices

[Learn more about Benilde Services](#)

If you or someone you know is struggling or needs support now, call or text 988 or chat 988lifeline.org – You are not alone.



Follow Benilde Hall on social media

Follow us on social media so you don't miss out on exciting new updates from Benilde Hall!



Benilde Hall
3220 East 23rd Street
Kansas City, Missouri 64127

Phone: (816) 842-5836
Fax: (816) 421-5026
info@mail.benildehall.org

Benilde Hall | 3220 E. 23rd St., Kansas City, MO 64127

[Unsubscribe info@mail.benildehall.org](mailto:info@mail.benildehall.org)

[Update Profile](#) | [Constant Contact Data
Notice](#)

Sent by info@mail.benildehall.org powered by



Try email marketing for free today!