

Godfrey S. Kobets



*Our mission: To provide services for treating substance use, mental health, and homelessness so that individuals may return to the community as responsible, employed, and permanently housed contributing members of society.*

## December 2022

---

### Executive Director's Letter:

We at Benilde Hall are looking forward to a wonderful holiday season. Thanksgiving was a big hit with great food. My wife Michelle and my parents came down and shared a Thanksgiving meal with the guys here at Benilde Hall. There are so many things to be thankful for. The men here at Benilde Hall are something I'm thankful for every day.

Lytle is scheduling work with subcontractors to start the actual work on the expansion at Benilde Hall. We are adding 8 single rooms with private bathrooms for Veterans in our Grant and Per Diem (GPD) Program. Crews will be on-site on December 19-20th to start the work. Work is scheduled to be finished by March 18th. We are still working on raising funds. At this time, we are still looking for \$50,000 to finish the \$725,000 total cost. We were blessed by the Veterans United Foundation, who donated \$5,000 for this project.

KC Cattle Company is donating Wagyu hamburgers as part of their fundraising efforts. It is a huge blessing to have our community come together.

I wish you many blessings and health for this season of gratitude.

A handwritten signature in black ink, appearing to read 'Kenneth Vick', is centered on the page.

Kenneth Vick  
MA, CRADC, CRPR, LAC  
Executive Director

---

### Donor Spotlight

**KC Cattle Company**

We are excited to announce that Benilde Hall's Safe Haven program is KC Cattle Company's newest Give Back Ground Beef recipient. Until the end of 2022, KC Cattle Company will be giving back to those we serve.

KC Cattle Company matched donations for the entirety of Giving Tuesday. For every pound of beef that was purchased, they donated one too!

We want to thank KC Cattle Company and their customers for their donations and support.



**Donate a Pound of Ground  
Beef & Give Back**



## Crochet with Tiffany Hansen

We want to thank content creator Crochet with Tiffany Hansen for putting together the Benilde Hall Crochet Christmas Campaign.

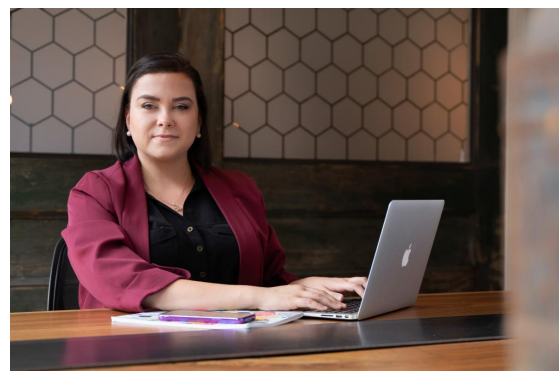
Tiffany is encouraging her followers to crochet winterwear and blankets to gift our clients this holiday season. The campaign ends Friday, December 16th.

Thank you to everyone who has participated so far!

## Meet Jen Payea: Clinical Director at Benilde Hall's Safe Haven Program

Originally from NW Ohio, Jen Payea is a Navy Veteran and active duty spouse. Most recently, in Ohio, Jen served as Executive Director for a substance abuse nonprofit and as a suicide prevention expert, speaking and educating thousands.

She spent a decade in Virginia Beach, where she completed her education at



Regent University in Psychology with an emphasis in Substance Abuse counseling. Jen was published several times during this period.

Jen spent more than 10 years fighting against Sex Trafficking. Working with victims, educating the community, and lobbying to change laws related to trafficking.

With Safe Haven, she hopes to grow the program and work with area organizations to have a greater collective community impact.

---

## Client to Staff Q&A: Meet Mark



Click below to read a Q&A with Mark, a former client who is now a Monitor at Benilde Hall's Safe Haven program.

[Read Mark's Q&A](#)

---

## In the News



Former Benilde Hall intern, Corey Schramm, was featured in an article from KCUR about the expansion of Veteran court programs in Kansas focused on helping Veterans with substance use disorder and trauma.

[Learn More](#)

---

## Upcoming Events



## The Bookmobile has a New Schedule!

### Benilde Hall

**October 10, 24  
November 14, 28  
December 12**

**9:30 - 11:00 AM**

**For more information:**

**[bookmobile@kclibrary.org](mailto:bookmobile@kclibrary.org) |  
816.701.3422**

When the Bookmobile visits, you can:

- Sign up for a Library Card
- Check out books and movies for all ages
- Request and pick up holds
- Return items from any KCPL branch
- Use free wifi
- Printing available
- Notary services available by appointment

---

**Hire Benilde Services**

NEED AFFORDABLE SNOW  
REMOVAL?

# Benilde Services

CALL 816-842-5836  
Free estimates & competitive prices

Godfrey S. Kobets  
 Benilde Hall

[Learn more about Benilde Services](#)

---

If you or someone you know is struggling or needs support now, call or text 988 or chat [988lifeline.org](https://988lifeline.org) – You are not alone.



---

Follow Benilde Hall on social media

Follow us on social media so you don't miss out on exciting new updates from Benilde Hall!



**Benilde Hall**  
3220 East 23rd Street  
Kansas City, Missouri 64127

Phone: (816) 842-5836  
Fax: (816) 421-5026  
[info@mail.benildehall.org](mailto:info@mail.benildehall.org)

Benilde Hall | 3220 E. 23rd St., Kansas City, MO 64127

[Unsubscribe info@mail.benildehall.org](mailto:info@mail.benildehall.org)

[Update Profile](#) | [Constant Contact Data Notice](#)

Sent by [info@mail.benildehall.org](mailto:info@mail.benildehall.org) powered by



Try email marketing for free today!